

Maiden Erlegh Trust

opportunity, diversity and success for all

schools for the community, schools as a community

schools for the community, schools as a community



MAIDEN ERLEGH
TRUST

opportunity, diversity and success for all

Values and Ethos

- A school of **opportunity**, diversity and success **for all**.
- Close partnership with parents, families and the wider community
- Mutual respect, equality, an understanding of other cultures, empathy with the wider world and a strong and collaborative work ethic.
- **High quality education** in a safe, caring and stimulating environment.
- **Education does not only happen in classrooms.**
- High standards of behaviour and self-presentation.
- **Highly effective and positive citizens, employees and employers in an ever changing and complex world.**

Vision

Vision Statement

Maiden Erlegh Trust Schools will continue to excel at bringing out the best in students of all abilities. To do this **we will place students at the heart of what we do and work closely in partnership with parents.**

schools for the community, schools as a community



MAIDEN ERLEGH
TRUST

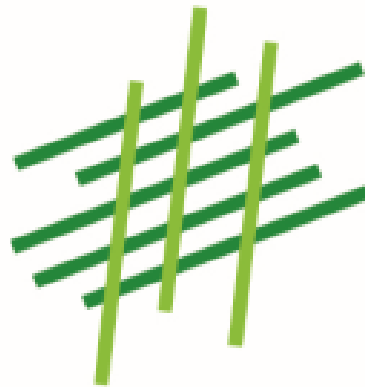
opportunity, diversity and success for all

?????

proud to support

time to change

let's end mental health discrimination



FRAMEWORK FOR
ETHICAL LEADERSHIP
IN EDUCATION

schools for the community, schools as a community



**MAIDEN ERLEGH
TRUST**

Trust Strategic Plan 2019 - 2023

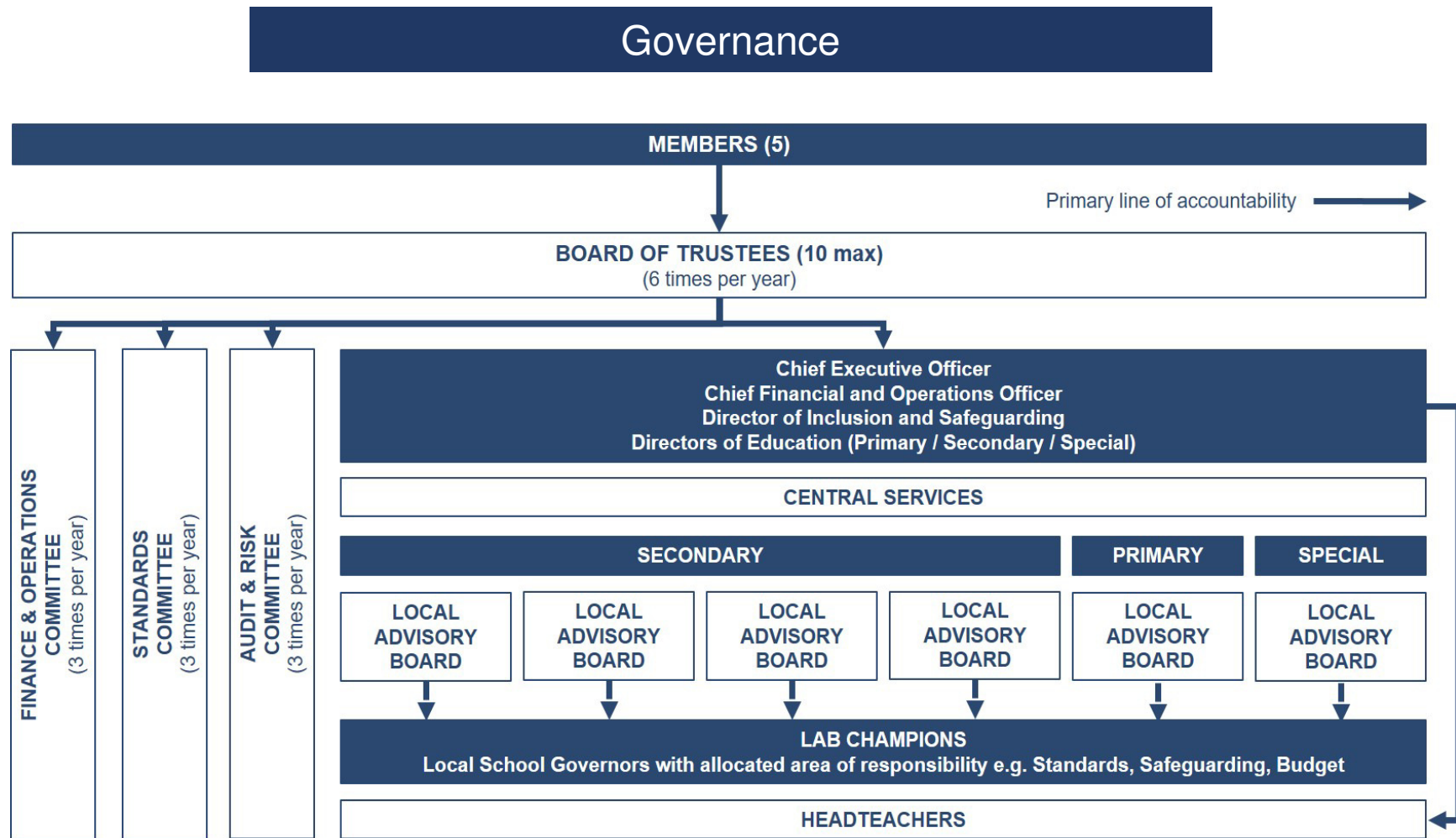
By 2023, the Trust will have grown to a size which can at least sustain the current quality of offer, but also fulfil our vision and moral purpose:

“to contribute to an education landscape where children and young people have equal access to an excellent education by going to their local community school”

Explicit objectives

- Expand range of schools: secondary, primary, AP/PRU, Special
- Continue to seek out further strength in each phase/type to support school improvement capacity.

opportunity, diversity and success for all



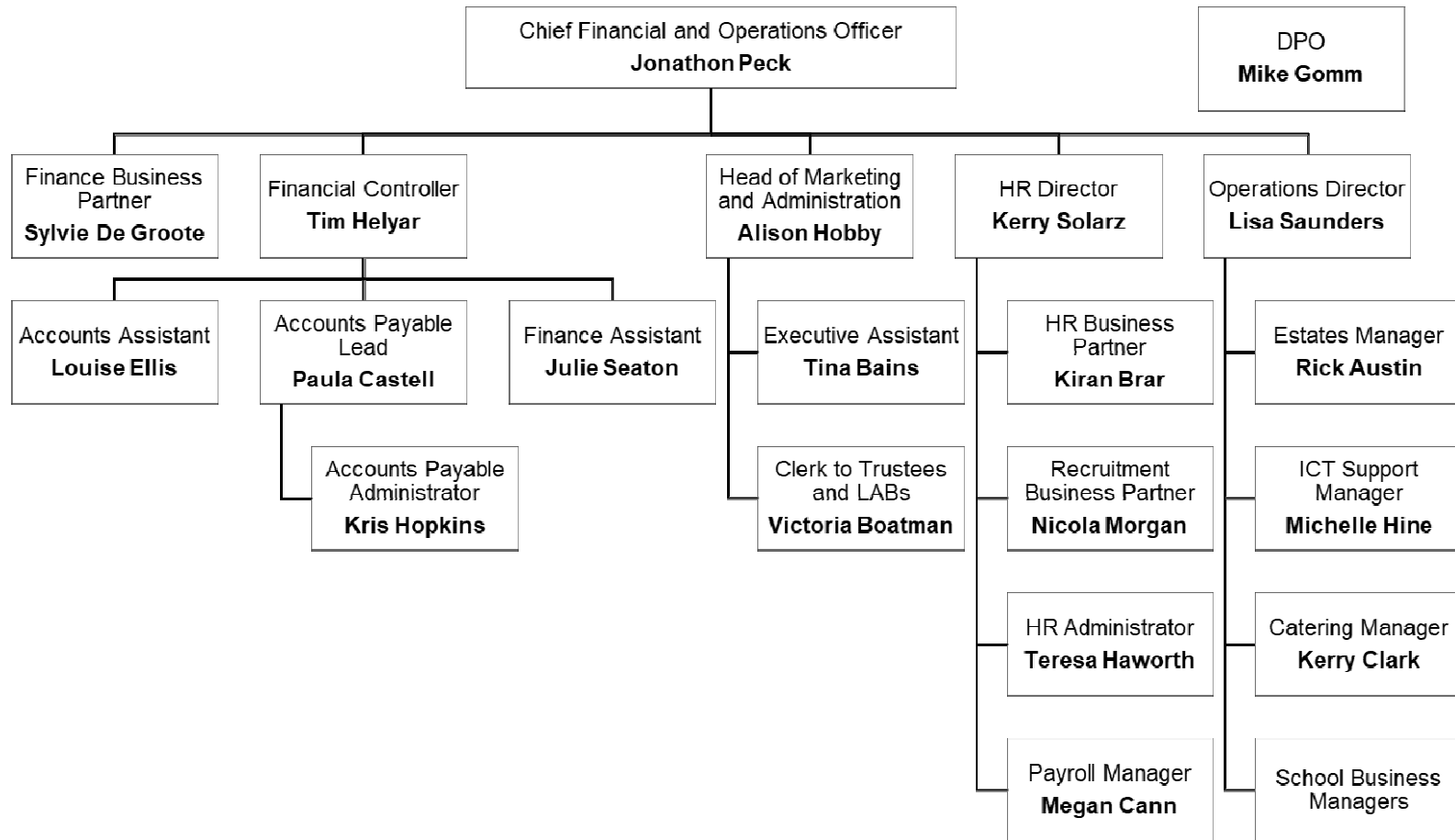
schools for the community, schools as a community



MAIDEN ERLEGH
TRUST

opportunity, diversity and success for all

Central Services



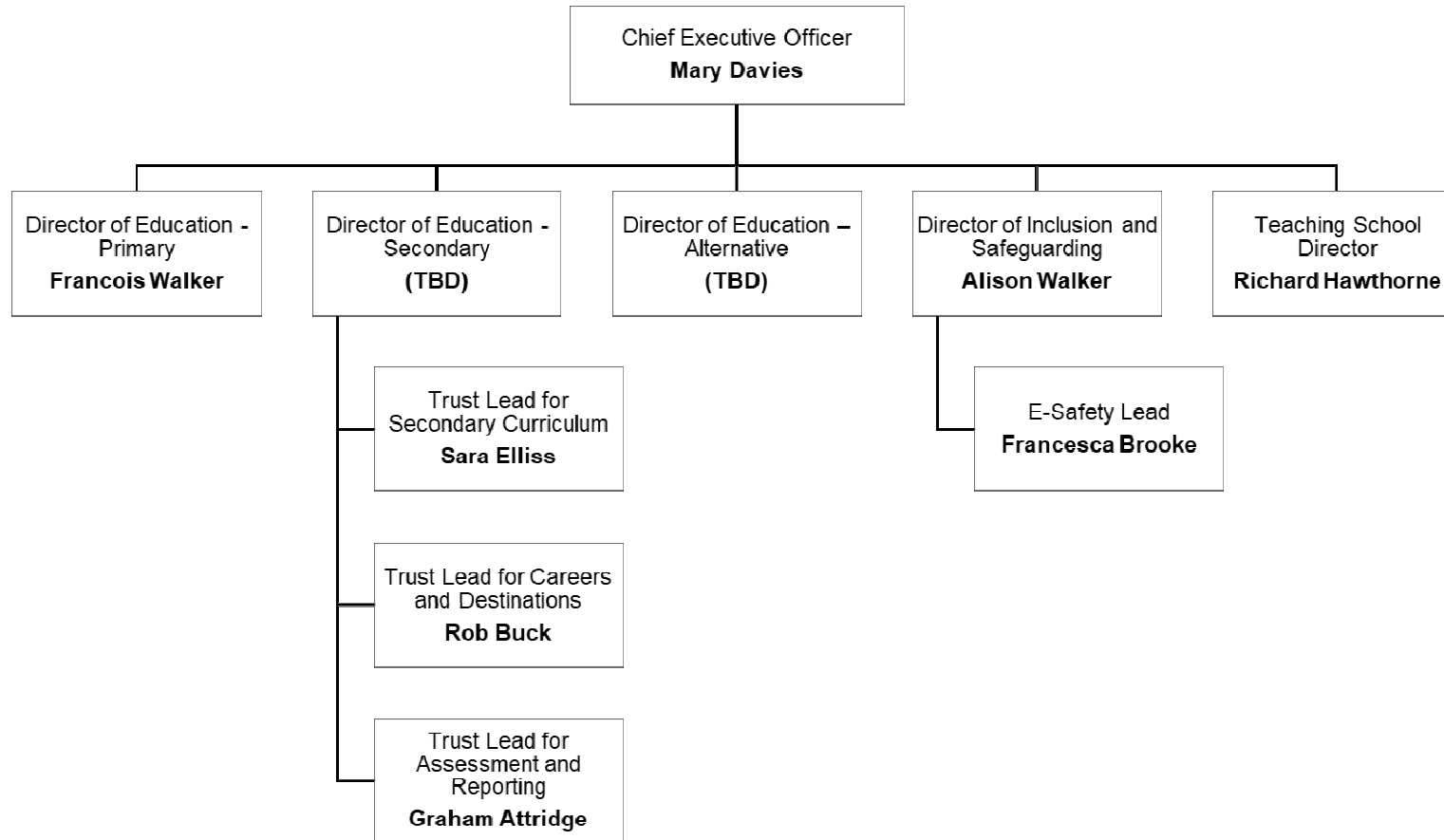
schools for the community, schools as a community



MAIDEN ERLEGH
TRUST

opportunity, diversity and success for all

School Improvement



schools for the community, schools as a community



MAIDEN ERLEGH
TRUST

opportunity, diversity and success for all

Benefits of the Trust

Student Outcomes

Executive Support

Leadership Development

School Improvement

Staff Development

Assessment / Data

Inclusion Support

Quality of Teaching Consistency (“DNA”)

Finance and Business Management

Estates and Facilities

HR, Legal and DPO

ICT

Health and Safety

Recruitment Support

Marketing Support

Economies of Scale

schools for the community, schools as a community



MAIDEN ERLEGH
TRUST

opportunity, diversity and success for all

Questions

QUESTIONS

schools for the community, schools as a community



MAIDEN ERLEGH
TRUST